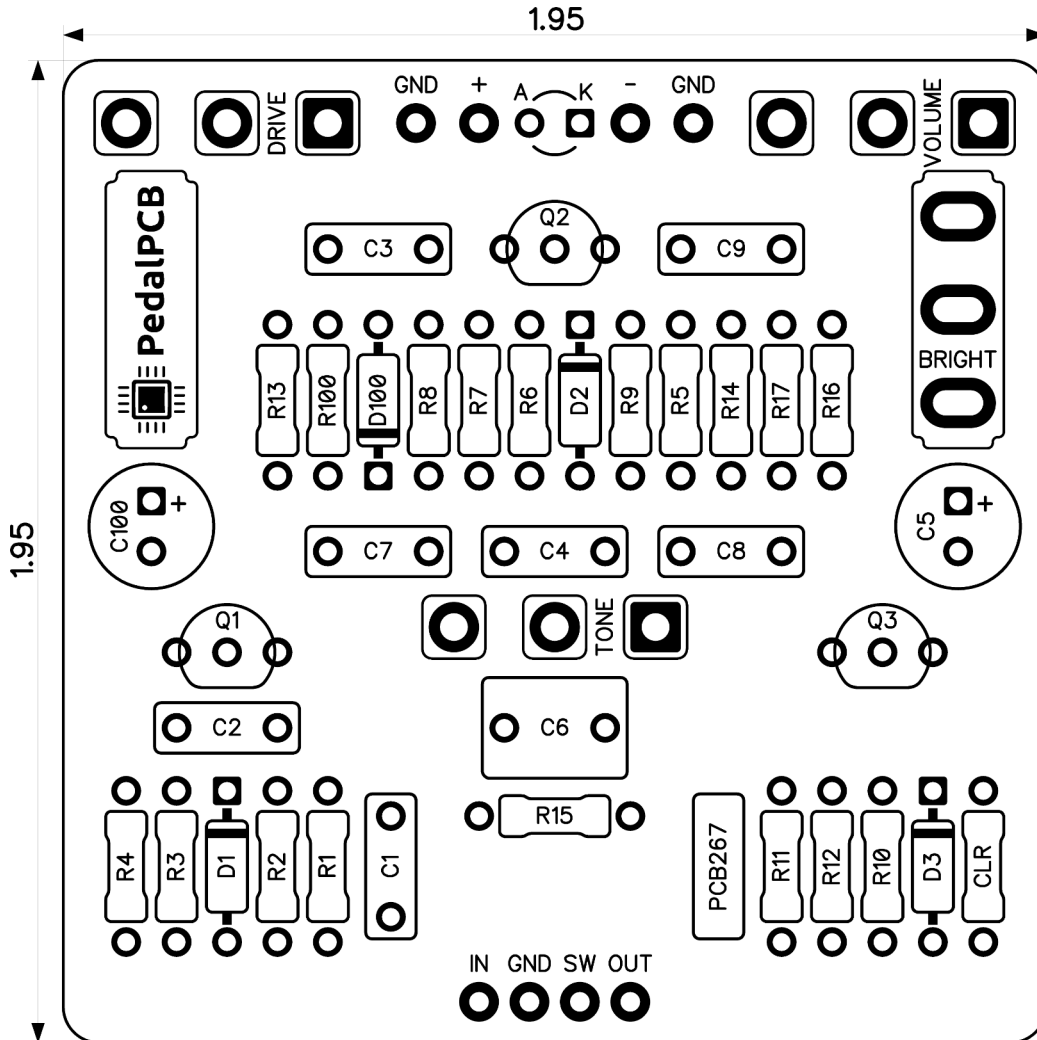


PedalPCB

Basstortr Bass Distortion

Revised 1/24/25



CONTROLS AND FEATURES

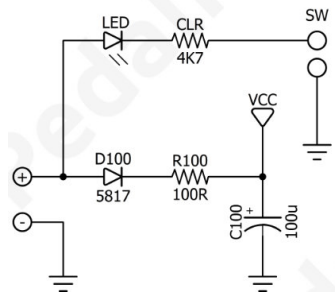
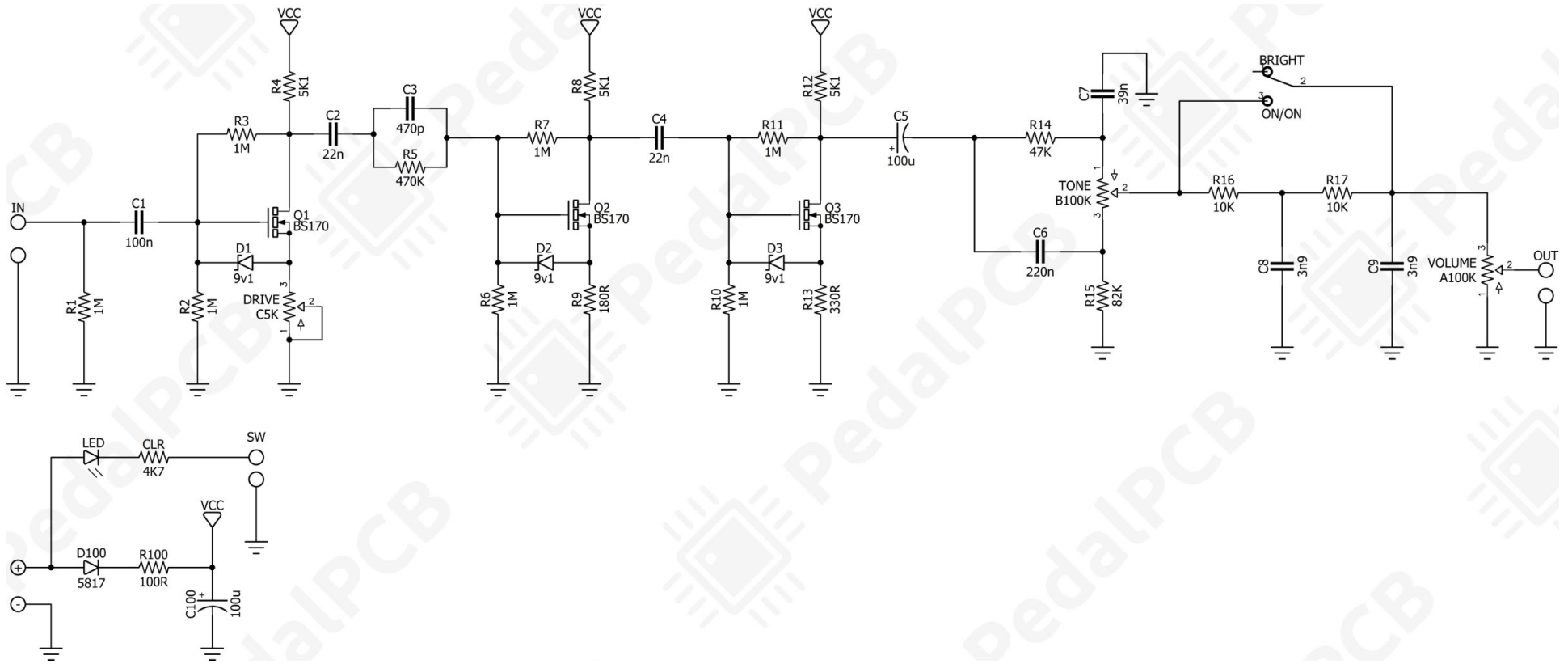
- Volume
- Tone
- Drive
- Bright (Toggle switch)

All trademarks and registered trademarks are the property of their respective owners. The company, product, and service names used in this web site are for identification purposes only. Use of these names, logos, and brands does not imply endorsement.

| LOCATION | VALUE | TYPE | NOTES |
|----------|---------|--------------------------------|---------------------------------|
| R1 | 1M | Resistor, 1/4W | |
| R2 | 1M | Resistor, 1/4W | |
| R3 | 1M | Resistor, 1/4W | |
| R4 | 5K1 | Resistor, 1/4W | |
| R5 | 470K | Resistor, 1/4W | |
| R6 | 1M | Resistor, 1/4W | |
| R7 | 1M | Resistor, 1/4W | |
| R8 | 5K1 | Resistor, 1/4W | |
| R9 | 180R | Resistor, 1/4W | |
| R10 | 1M | Resistor, 1/4W | |
| R11 | 1M | Resistor, 1/4W | |
| R12 | 5K1 | Resistor, 1/4W | |
| R13 | 330R | Resistor, 1/4W | |
| R14 | 47K | Resistor, 1/4W | |
| R15 | 82K | Resistor, 1/4W | |
| R16 | 10K | Resistor, 1/4W | |
| R17 | 10K | Resistor, 1/4W | |
| R100 | 100R | Resistor, 1/4W | |
| CLR | 4K7 | Resistor, 1/4W | * LED current limiting resistor |
| | | | |
| C1 | 100n | Film capacitor, 7.2 x 2.5mm | |
| C2 | 22n | Film capacitor, 7.2 x 2.5mm | |
| C3 | 470p | Ceramic capacitor | |
| C4 | 22n | Film capacitor, 7.2 x 2.5mm | |
| C5 | 100u | Electrolytic capacitor, 5mm | |
| C6 | 220n | Film capacitor, 7.2 x 5.0mm | |
| C7 | 39n | Film capacitor, 7.2 x 2.5mm | |
| C8 | 3n9 | Film capacitor, 7.2 x 2.5mm | |
| C9 | 3n9 | Film capacitor, 7.2 x 2.5mm | |
| C100 | 100u | Electrolytic capacitor, 5mm | |
| | | | |
| D1 | 1N5239B | Zener diode, 9.1V 1/2W | |
| D2 | 1N5239B | Zener diode, 9.1V 1/2W | |
| D3 | 1N5239B | Zener diode, 9.1V 1/2W | |
| D100 | 1N5817 | Schottky diode, DO-41 | |
| | | | |
| Q1 | BS170 | N-Channel MOSFET | |
| Q2 | BS170 | N-Channel MOSFET | |
| Q3 | BS170 | N-Channel MOSFET | |
| | | | |
| VOLUME | A100K | 16mm right-angle PCB mount pot | |
| TONE | B100K | 16mm right-angle PCB mount pot | |
| DRIVE | C5K | 16mm right-angle PCB mount pot | |
| | | | |
| BRIGHT | ON/ON | Toggle switch, SPDT | 2-position (ON/ON) |

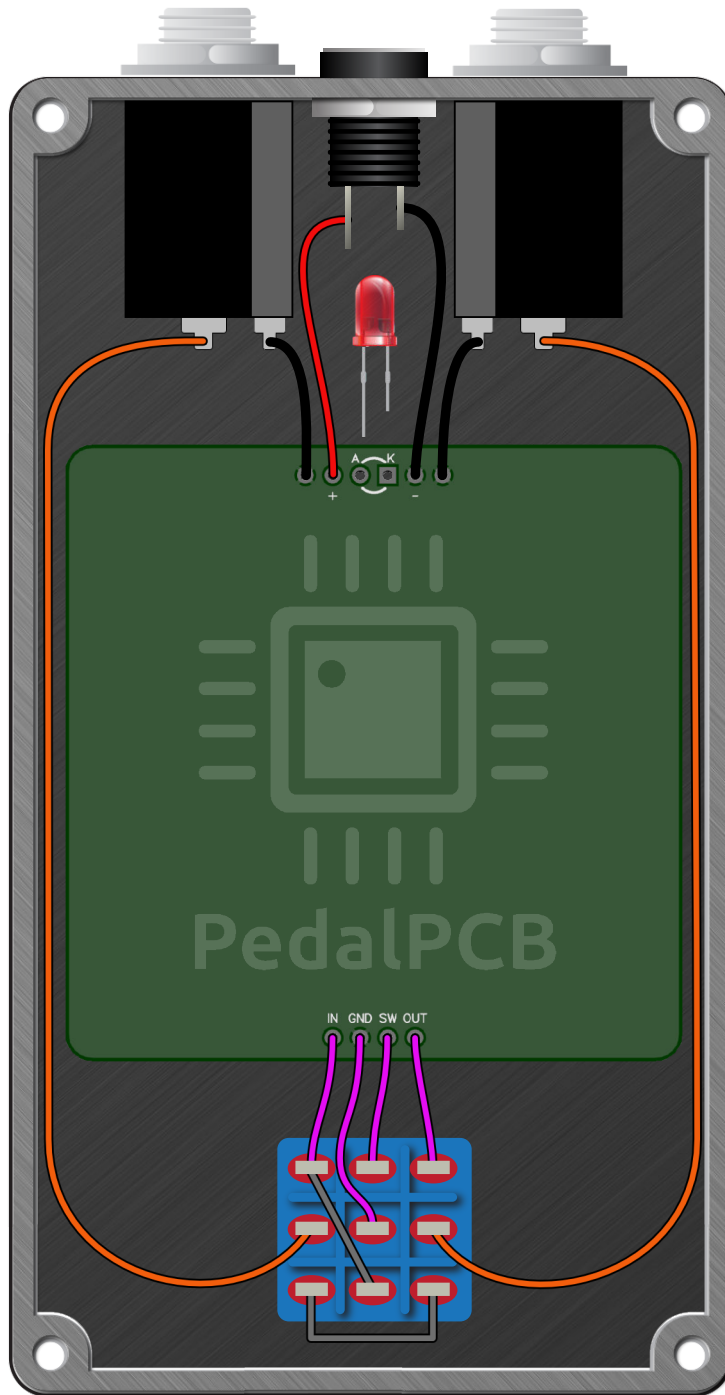
Basstortr Bass Distortion

Schematic Diagram



Basstortr Bass Distortion

Wiring Diagram



Basstortr Bass Distortion

Drill Template
125B Enclosure

