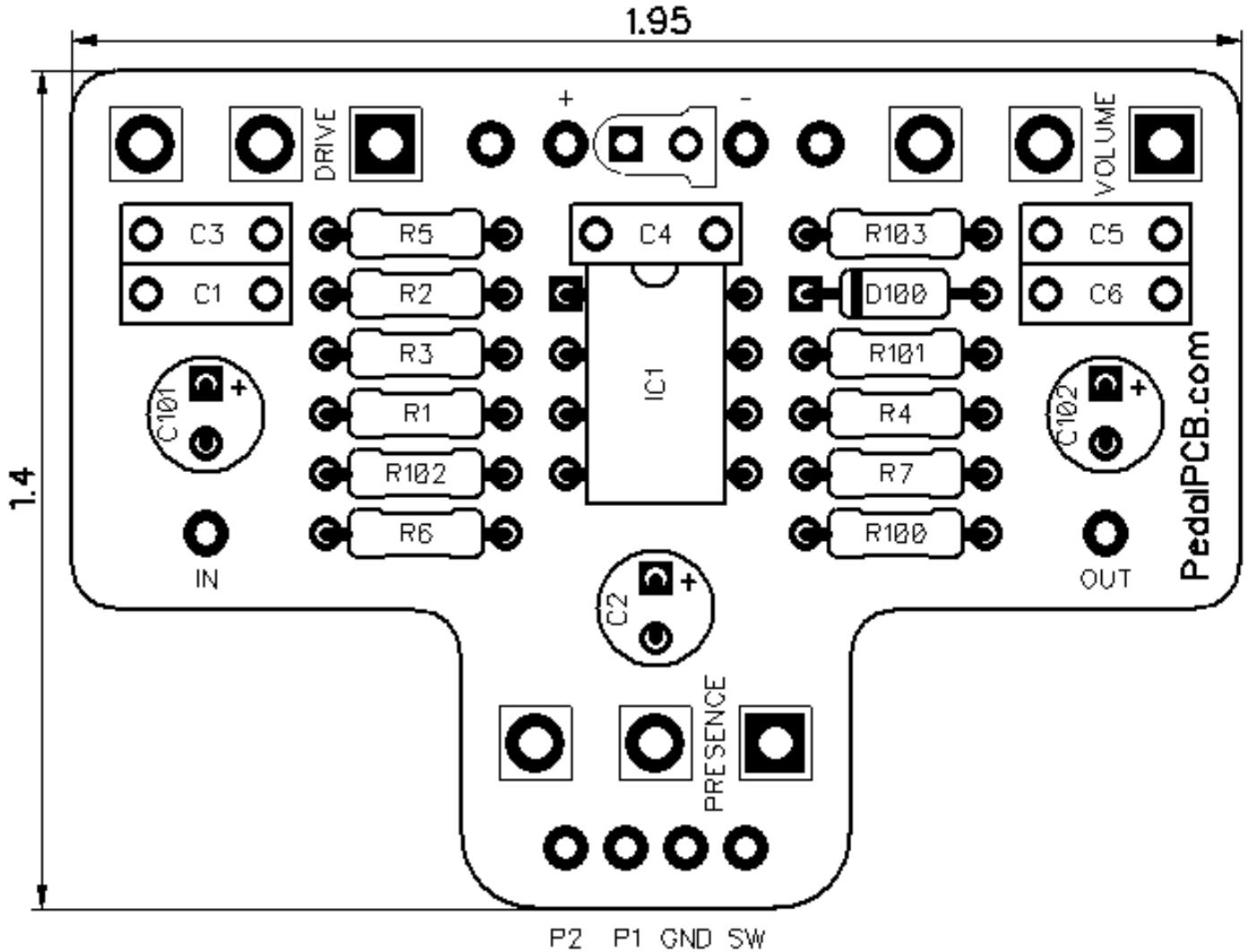




PedalPCB

Awful Waffle

Revision 07.07.18



Controls

- **Volume** - Sets the overall output volume
- **Drive** - Controls the amount of signal gain / distortion
- **Presence** - Controls upper mid-range frequencies

All trademarks and registered trademarks are the property of their respective owners. The company, product, and service names used in this web site are for identification purposes only. Use of these names, logos, and brands does not imply endorsement.

Awful Waffle

Parts List

RESISTORS

R1 10K
R2 1M
R3 100K
R4 10K
R5 220R
R6 1K
R7 10K
R100 4K7
R101 82K
R102 100K
R103 220R

CAPACITORS

C1 10n
C2 10u
C3 82n
C4 470p
C5 22n
C6 56n
C101 10u
C102 100u

INTEGRATED CIRCUITS

IC1 LM741

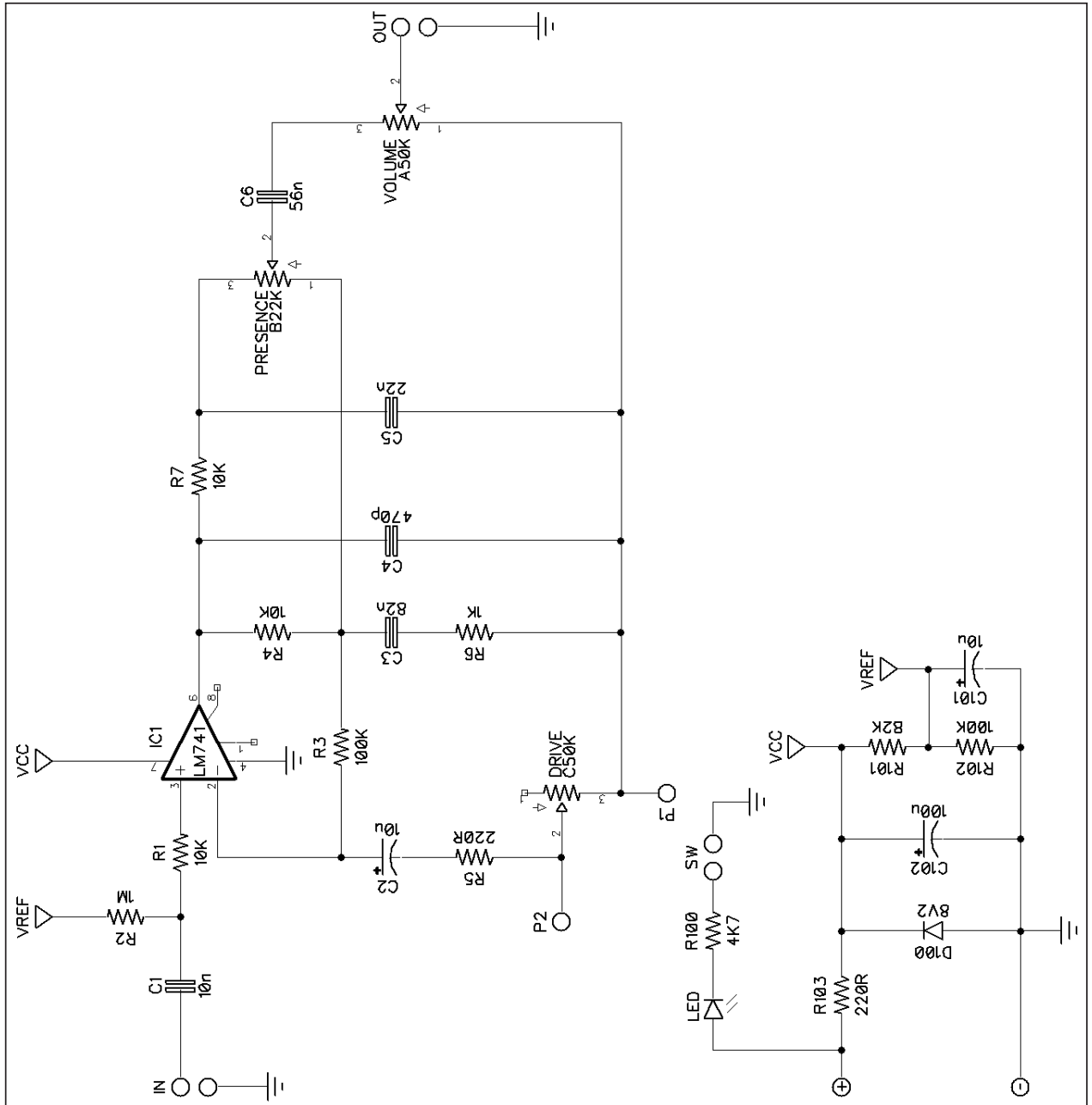
DIODES

D100 8V2 Zener

POTENTIOMETERS

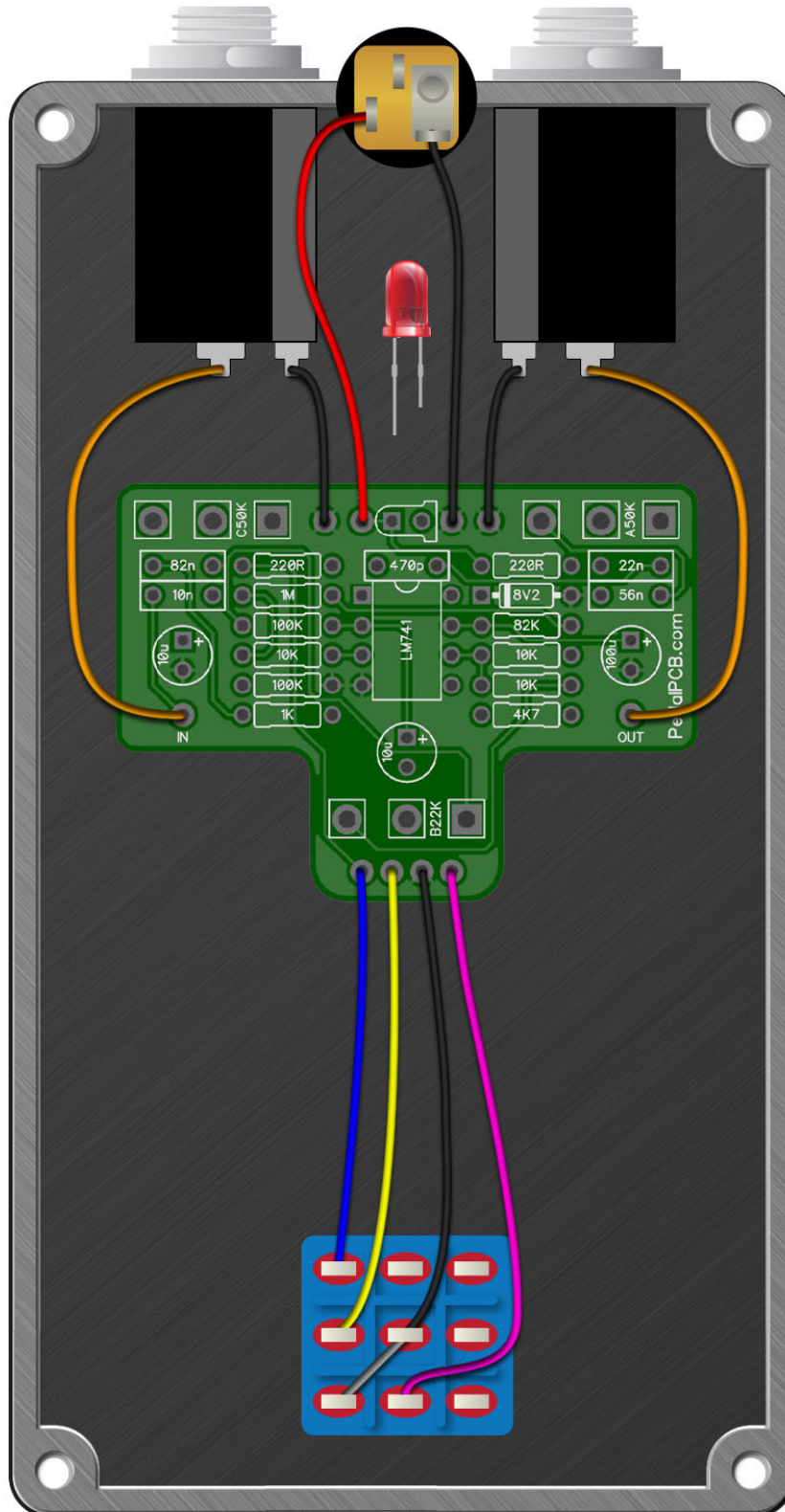
VOLUME A50K
DRIVE C50K
PRESENCE B22K

Awful Waffle



Awful Waffle

Wiring Diagram



Awful Waffle

Drill Template
125B enclosure with top mounted jacks

